



# SMX Elevate ISR<sup>SM</sup> Toolkit

The Elevate ISR Toolkit is a Virtual Work Environment which revolutionizes remote work by providing more than just virtual desktop access. The Elevate ISR Toolkit solution is designed as a secure, self-service, and mission-tailored virtual workplace specifically for business and analytic units. This environment integrates multiple cloud infrastructure services, controlled access to commercial and proprietary data sets, and a tailored suite of software tools to support daily operations, special projects, and training initiatives, providing a user-friendly cloud native infrastructure for all team members. The toolkit enables customers to instantly provision fully functional, purpose-built workstations; maintain them for as long as needed; and if desired, have them evaporate when no longer required. The Elevate ISR Toolkit is powered by Anantyx, which offers a revolutionary self-service cloud management platform designed for mission users.

Elevate ISR Toolkit's approach to virtual desktops is part of its larger vision to democratize cloud services, making them easily accessible and manageable without requiring specialized IT skills. The platform allows for the rapid provisioning of complete cloud environments, facilitating innovation, especially within the Elevate ISR's Digital Test Range offering. By providing a recyclable, secure, and accessible cloud environment, the Digital Test Range (DTR) supports evaluation of new technologies in very specific and highly controllable environments. It allows for pressure and penetration testing of security controls or validating best practices like Zero Trust security.

This holistic approach to virtual work environments ensures that organizations can effectively collaborate and innovate, regardless of their physical location, by leveraging a comprehensive suite of cloud services and flexible, secure tools. Elevate ISR Toolkit radically transforms the remote collaboration experience.

## Key Capabilities

### Advanced Security

- Multi-Factor Authentication capability
- Ability to disable any uncontrolled upload and/or download functionality
- CAC, PIV, Smart Card access

### Mission-Tailored Virtual Workplace

- Customized or adapted to fit the specific needs of different business units or missions
- Ability to manage attribution/obfuscation

### Intuitive User Experience

- Immediate self-service cloud workplace provisioning
- Utilizing plain language and drop-down choice selection
- Lowers the barrier to entry for non-IT personnel
- Dual screen monitor capability

### Rapid Implementation

- Very easy and quick to deploy

### Powerful Cloud Management

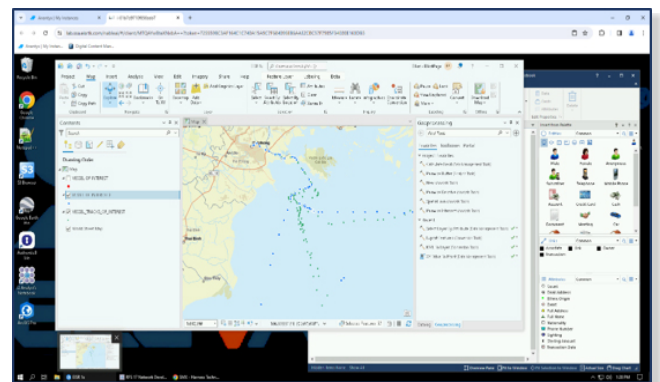
- Ability to set guardrails and maintain governance/compliance
- Powerful budget and cost control capabilities

### Instant Compute Resources Scaling Up or Down

- Seamless handling of compute-intensive tasks
- Operates within limited bandwidth environments, ensuring efficiency and agility in operations
- Cost Management

### Remote Compute Resources Access via Web Browser

- Multiple device accessibility (laptop, tablet, phone)



For more information, please contact: [solutions@smxtech.com](mailto:solutions@smxtech.com)

SMX harnesses the transformative power of technology to achieve mission success as a leader in digital and mission solutions, specializing in secure and advanced cloud, ISR, cyber, data analytics, engineering, space, and IT solutions. Operating in close proximity to our clients across the globe, the SMX team has a shared vision to deliver scalable and secure solutions to assure outcomes for the critical missions of our Government and commercial clients.

Learn more about our current contracting vehicles: [www.smxtech.com/contracting-vehicles](http://www.smxtech.com/contracting-vehicles)