

# Matrix2<sup>SM</sup> Watchbox Capability

Matrix2 is a mission management application enriched with a variety of features and components. Visualize both traditional and non-traditional intelligence, surveillance, and reconnaissance (ISR) data on a global scale and build custom alert areas that take you farther than just indications and warnings. The information layers embedded in Matrix2 go beyond typical data points and include AI-based sentiment analysis, signals characterization, and pattern of life analysis capabilities.

Matrix2's Live Map Viewer (LMV) can ingest, filter, mesh, and visualize content from disparate datasets for situational awareness and analysis. The backend engine supporting Matrix2 can present social media, satellite, ISR, and other publicly available information/commercially available information (PAI/CAI) data layers, including imagery, video, and metadata. This powerful commercial tool automates data refresh of PAI/CAI data and can be used to create complex responses to different alerts based on your needs.

Matrix2 includes the Automation Profile Administrator (APA), which applies rules and conditions to incoming information and triggers messaging, alerts, reports, and other automated actions. These rules and automations give you a robust toolset for consistent monitoring and complex workflows. Additionally, LMV supports all standard features of a traditional PED workflow, including video telemetry visualization, chat, audio, sensor metadata tagging, and product generation. VideoBank Actionable Intelligence Systems (AIS) merges data and sensor analysis to streamline operational workflows, providing a comprehensive operational view through advanced geospatial and temporal visualizations.

## Key Elements

- Mission Organization and Workflow Customization
- Extensive Data Visualization and Map Layer Saving
- API Pipeline Integration with Flexibility and Scalability
- Automated Watchbox Searchability and Alerting
- Remote Watchbox Pushing and Pulling
- LLM Report Generation API Plugin

## Customized Watchbox Rule Creation and Visualization

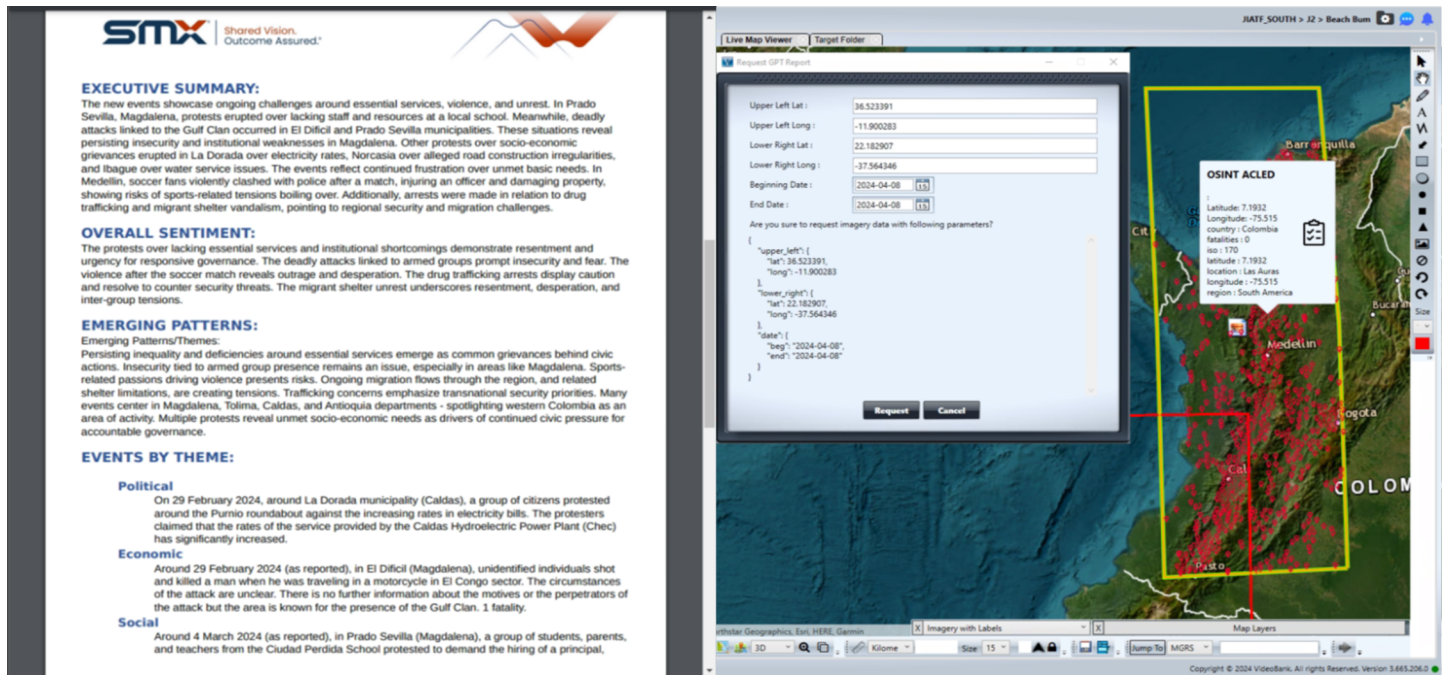
Apply rules and conditions to incoming information over visualized watchboxes and data to trigger messaging, alerts, reporting, and other automated actions.

The image displays two side-by-side screenshots from the Matrix2 application. The left screenshot shows the 'Automation Profile Administrator (APA)' window. It features a 'Rule Settings' section with fields for 'Rule Type' (OSINT API Detection), 'OSINT Profile' (ACLED), 'Key words' (drugs, fentanyl), and 'Area of Interest' (Venezuela). The 'Action' section includes checkboxes for 'Apply Geospatial Model' and 'Apply Python Model', and a 'Taskit' section with 'Create Taskit' and 'Use Previous Trigger Taskit' options. The 'Destination' section shows 'Link To Target Folder' and 'Scenario 1B'. The right screenshot shows a global map visualization with various colored markers and overlays, representing the data being monitored. The map is titled 'Imagery with Labels' and includes a 'Radius (km)' field set to 0.

Watchboxes and their data can be pushed and pulled offline into a queue for edge data collection and breakout capability.

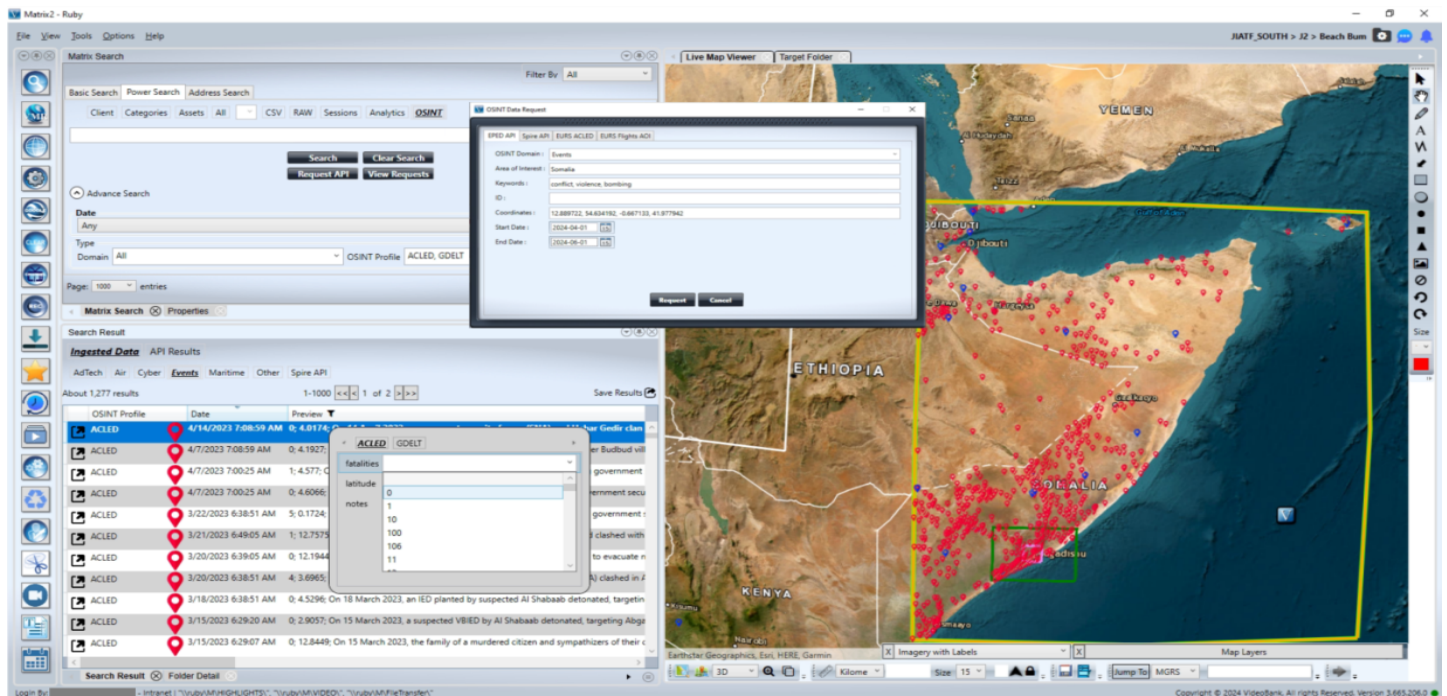
## Watchbox Actionability including LLM Summary Reporting

As data manually or automatically flows into Matrix2, further automated or user-driven actions can be implemented. Notable examples include alert reports or AI-generated LLM summary reports.



## Customized API Data Visualization and Filtering:

Users can integrate API endpoints and customize filters through dynamic API and display configurations to sift through information precisely and efficiently.



For more information, please contact: [solutions@smxtech.com](mailto:solutions@smxtech.com)

SMX harnesses the transformative power of technology to achieve mission success as a leader in digital and mission solutions, specializing in secure and advanced cloud, ISR, cyber, data analytics, engineering, space, and IT solutions. Operating in close proximity to our clients across the globe, the SMX team has a shared vision to deliver scalable and secure solutions to assure outcomes for the critical missions of our Government and commercial clients.

Learn more about our current contracting vehicles: [www.smxtech.com/contracting-vehicles](http://www.smxtech.com/contracting-vehicles)