



SMX Elevate ISRSM

Digital Test Range

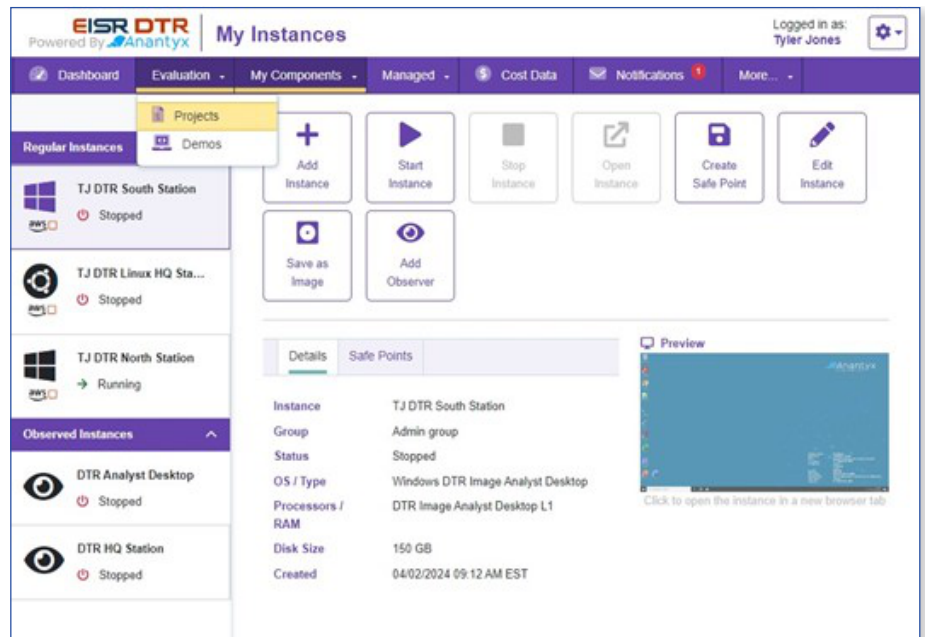
The SMX Digital Test Range (DTR) is designed to foster innovation and tool testing by providing a secure and accessible cloud environment that has built-in levers to mimic low-bandwidth environments. It includes specialized labs like the Test & Evaluation Mission Lab and the Technology Sandbox as well as facilities for software patching and upgrades. This framework supports the exploration and implementation of emerging technologies and best practices, including ZeroTrust security. SMX DTR is powered by Anantyx, which offers a revolutionary self-service cloud management platform designed for mission users.

SMX DTR has the capability to conduct exercises that emulate real-world mission parameters, including contested environments, restricted bandwidth, and limited communications. These simulations are designed to test and improve the resilience and effectiveness of technologies and strategies under challenging conditions, closely mirroring actual operational scenarios.

The overarching aim of the SMX DTR is to provide a secure, controlled setting for testing and advancing technological solutions within an expedited timeframe.

Key Capabilities

- Environment that supports innovation through the exploration and implementation of emerging technologies
- Virtual Observatory that provides unlimited Anonymous Observation
- Pre-built Mission Labs for cybersecurity practices
- Technology Sandboxes for test and evaluation of new tools and software
- Dedicated areas for software patching and upgrades to maintain system integrity
- Emulates real-world mission parameters
- Positioned as secure virtual training environment



For more information, please contact: solutions@smxtech.com

SMX harnesses the transformative power of technology to achieve mission success as a leader in digital and mission solutions, specializing in secure and advanced cloud, ISR, cyber, data analytics, engineering, space, and IT solutions. Operating in close proximity to our clients across the globe, the SMX team has a shared vision to deliver scalable and secure solutions to assure outcomes for the critical missions of our Government and commercial clients.

Learn more about our current contracting vehicles: www.smxtech.com/contracting-vehicles